



IPARC & MOBULL

Transportation • Conservation • Storage



IPARC & MOBULL

A joint venture dedicated in response services for:

- paintings
- contemporary visual arts
- sculpture
- works of art on paper
- antique and fine furniture
- architectural elements



We ensure accurate inventory, safe transportation and storage while maintaining maximum security and climate control for artworks.

Upon request and if required by the client or situation, our teams can also be dispatched to emergency situations including fire, flooding or accidental damage.

In addition IPARC provides expert conservation and restoration, along with personalized disaster response plans that help protect artwork for future damage.

IPARC & MOBULL direct services to:

- Museums
- Church authorities
- Corporate and private collections
- Art dealers and galleries
- Disaster response & insurance companies.

Evacuation & transportation

The response team is comprised of in-house conservators and professional art handlers ready to challenge any scope of work. We mobilize quickly to assess, stabilize, de-install, professionally pack and transport artwork to safety. The utilization of museum quality archival materials and customized crating ensures complete protection. Mobull's fleet of climate-controlled trucks have the volume to accommodate any sized assignment and provide a safe environment for transport.

Storage

MOBULL has its headquarters and storage facilities in a business premises on the outskirts of Brussels, situated very close to the national (cargo) airport and at the junction of the main approach roads.

With over 5.000 m2 of climate controlled and secured storage MOBULL is prepared to meet any demands, even in case of an emergency. The storage facilities feature state of the art security systems offering 24/7 surveillance with camera monitoring, motion detection, smoke, moisture and temperature monitoring. An interior dock makes for unloading trucks within the building, in a stable environment, sheltered from weather conditions.

Conservation & restoration

IPARC runs its workshop and laboratory under the same roof as Mobull, enabling works to move back and forth from storage for treatment without handling outside the building.

In the design of the workshop (approx. 300 m2) the emphasis was on security, fire and smoke detection, climate control and the organisation of the different working areas.

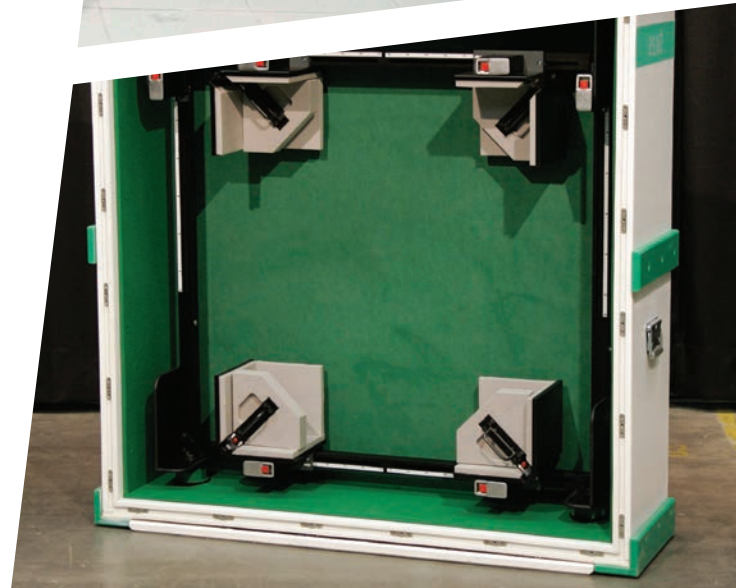
Potentially damaging, dust-proof/dusty, and noisy activities are isolated from each other; the laboratory, moreover, is located in a separate zone, where all analyses can take place together, with direct access to digitalisation via camera or computer. The workshop is fully equipped, so that

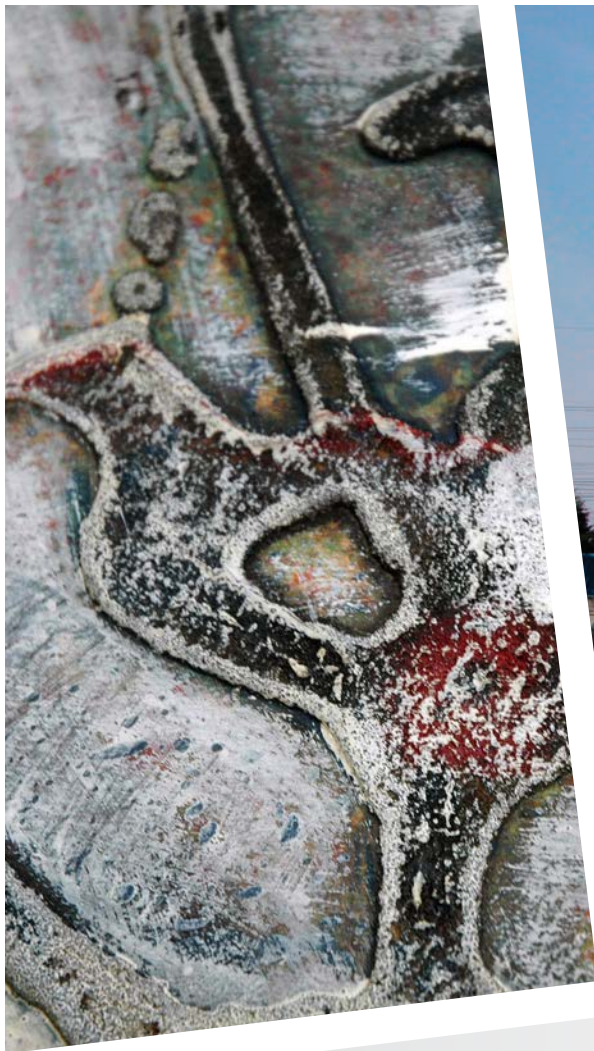
several objects can be treated in parallel, and has a wide range of technical equipment, easels and treatment tables. Extraction is provided at a number of points where vapours and odours may be released in the course of treatment.

IPARC's qualified and certified conservators work in different teams based on the topology of art objects. For each artistic discipline, IPARC has a senior conservator who can give leadership and who also assumes final responsibility. In this way, quality and methodology (specific to the discipline in question) are guaranteed, while the structure also makes possible exchanges of know-how and best practice between the different disciplines.

In case of an emergency or disaster IPARC will
-following the removal and assessment process-
execute conservation and restoration procedures,
individualized to each object and related disaster:

- the removal of pollutants without compromising the integrity of artwork
- consolidation and stabilization
- long-term storage capability
- re-installation
- inventory management, full documentation of objects/collection
- detailed condition reports with conservation and restoration recommendations
- research and analysis:
 - stratigraphic colour analysis
 - material and technical research
 - chemical analysis
 - microscopic analysis
 - IRR (infrared reflectography)
 - UV photography
 - climatic test chamber
 - camera inspection.





In case of an
emergency (24/7):



International
Platform for
Art Research &
Conservation

**International Platform
for Art Research &
Conservation (IPARC) cvba**

In cooperation with CultuurInvest

1820 Melsbroek
TEL +32 2 303 60 45
MOB +32 473 92 82 51
info@iparc.eu
www.iparc.eu



MOBULL bvba
A Hasenkamp company

1930 Zaventem
TEL +32 2 253 79 19
MOB +32 473 35 99 95
info@mobull.be
[www.hasenkamp.com/en/
locations/europe.html](http://www.hasenkamp.com/en/locations/europe.html)